



skytec

AIRCRAFT TRANSITION SOLUTION

FAST. CERTIFIED. SEAMLESS.

[SKYTEC-AERO.COM](https://skytec-aero.com)

+43 2638 20305

OFFICE@SKYTEC-AERO.COM



Approved
Part 21
Production Organization
AT.21G.0025

Approved
Part 21
Design Organization
EASA.21J.796

WHEN AIRCRAFT CHANGE HANDS, EVERY DETAIL MATTERS.

Delays cost money, fragmented suppliers create risk, and certification bottlenecks slow down even the best teams.



At Skytec, we combine **EASA DOA** and **POA**, engineering, and program management into **one streamlined transition partner**. From design and certification to hardware production and support, we reduce suppliers, cut downtime, and deliver **faster, fully certified aircraft transitions**.

Your transition. Simplified. Accelerated. Certified.



THE SKYTEC EDGE

- EASA DOA + POA in one company
- Certain Major Changes & STCs approved in-house
- AOG-capable production lead times
- Reduced dependency on multiple suppliers
- Reduced downtime and faster transitions
- Dedicated program managers & on-site support



WHY SKYTEC FOR AIRCRAFT TRANSITIONS?

Aircraft transitions are time-critical and costly when delayed. With experience from 120+ transition projects, Skytec delivers fast, clear, and certified transition support, from LOPA changes and cabin reconfiguration to documentation updates and POA-produced cabin components. Backed by DOA expertise and the EASA privilege to approve certain Major Changes and STCs in-house, we remove certification bottlenecks and keep transitions on schedule.

- We reduce your workload so that you can focus on your core business
- We analyze options with you, enabling confident, timely decisions
- We take care of all parts, materials, and logistics, including shipping
- We proactively manage the project, reducing risk and preventing delays

Skytec
Transition
Solutions

ON

OFF

Bottlenecks
Complexity
Delays

→ **+120**

Aircraft transition
projects supported
worldwide

→ **11**

Specialized Transition
Services

→ **100%**

Customer-Oriented
Project Management





OUR EASA PRIVILEGE: YOUR ADVANTAGE IN EVERY TRANSITION

Skytec's Design Organization Approval (DOA) has been expanded with a new **EASA privilege** that allows us to **approve selected Major Changes and STCs directly in-house**.

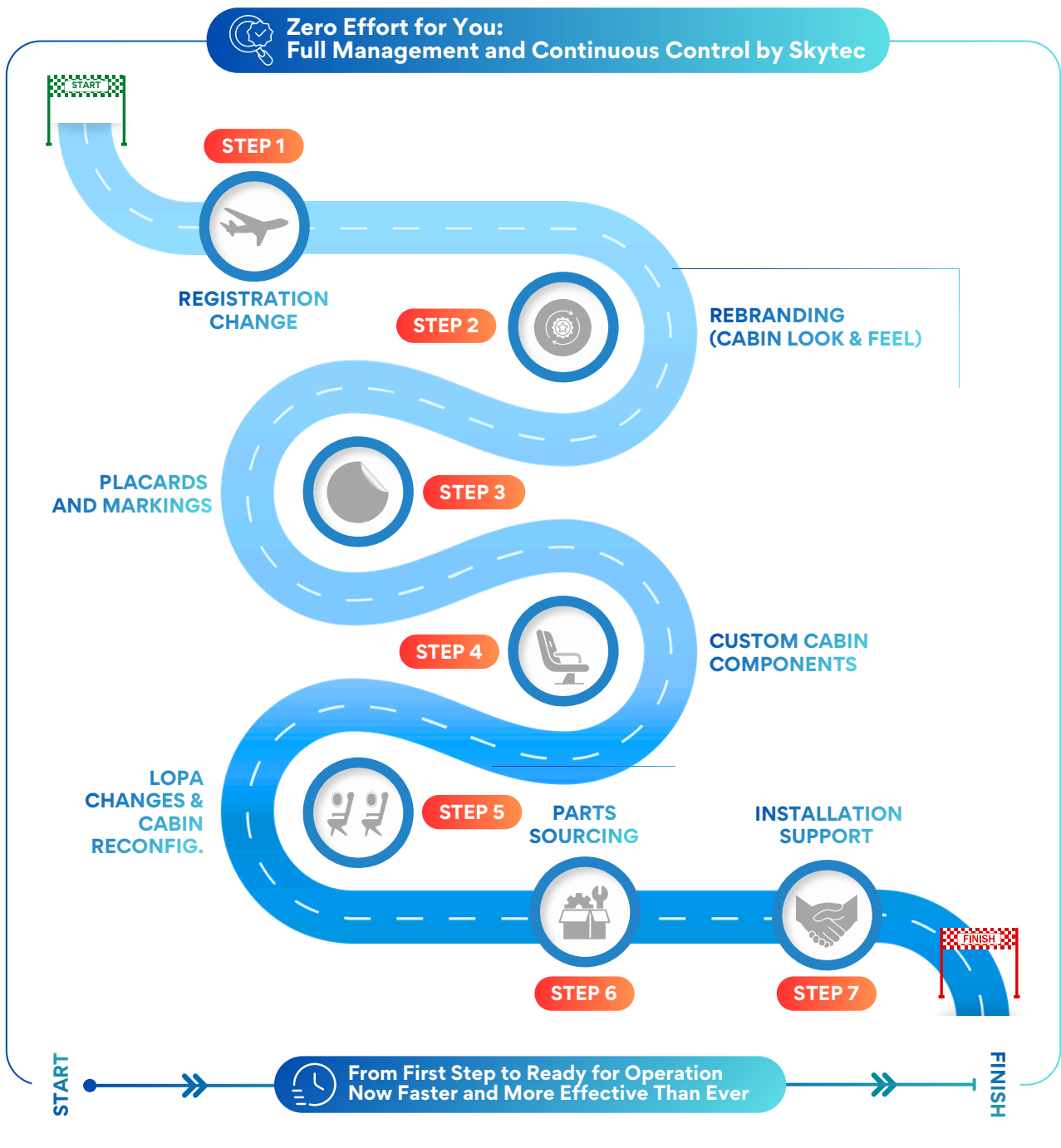
This capability enables Skytec to **certify modifications such as LOPA changes, seat installations, and seat relocations without relying on external approvals**. The result is a faster, more streamlined certification process with fewer dependencies, lower costs, and significantly reduced ground time.

For our customers, this means one clear advantage: a faster and more predictable aircraft transition, delivered by a partner with both the authority and expertise to move your aircraft forward efficiently.



→ NO MORE COMPLEXITY. JUST THE SKYTEC WAY.

We remove complexity, reduce delays, and guide your aircraft through every transition step.





REGISTRATION CHANGE



Reg. changes delaying your transition and unclear steps slowing everything down?

Skytec delivers a fast, all-in-one registration solution, managing engineering, certification, hardware, and on-site support so you don't have to worry about any detail.

ONE ALL-IN-ONE PROCESS, HANDLING REGISTRATION CHANGES FROM START TO FINISH.

We take care of the full workflow, ensuring nothing is missed.

- Engineering & certification (Minor Change incl. Reg change, Mode S / ELT reprogramming, etc.)
- Hardware production (full registration kit, markings, plates, labels)
- On-site support for reg kit installation, etc.

A single partner coordinating every detail



It's been a pleasure working with Skytec. They surpassed our expectations with their attention to detail and adaptability.

An excellent and responsive provider of outstanding design, certification, and production services.



Martin Haas

CELAIRION Compliance and Safety Manager / Celairion



REBRANDING (CABIN LOOK & FEEL)



Need to rebrand the cabin quickly, but coordinating design, certification, and hardware supply slows the transition?

We deliver a fast, all-in-one rebranding package so you don't have to manage multiple suppliers:

- Cabin rebranding concept & design (look, colors, branding logic)
- Carpet, NTF, curtain & décor foil
- Seat cover, antimacassar, and other branding elements
- Engineering & certification where required
- POA production of interior elements with EASA Form 1

WE TAKE CARE OF THE ENTIRE REBRANDING PACKAGE, FAST, COORDINATED, AND FULLY CUSTOMIZED, SO YOUR CABIN REFLECTS A NEW IDENTITY WITHOUT ANY HASSLE FOR YOU.



Cabin rebranding fully designed and certified under our DOA



Hardware supplied quickly through our extensive approved supplier network



Hardware produced in-house with optional EASA Form 1 through our POA



Very efficient and expedient creation of design documents.
Solution-oriented mindset and pragmatic approach.
Highly flexible for short-notice or unplanned assignments.



Wolfgang Ebner

Group Director Operations & Product Services Region EMEA / F/List




PLACARDS AND MARKINGS



Are missing, outdated, or incorrect placards delaying your transition and creating compliance issues?


We deliver fast, complete, and fully certified placard solutions, from complete interior kits to new language sets and exit lens markings, so your aircraft meets all regulatory and operator requirements without delays.



PLACARD DESIGN AND CERTIFICATION UNDER OUR DOA



READY-TO-INSTALL, CERTIFIED MULTILINGUAL PLACARD KITS



OFF-THE-SHELF KITS FOR A320, A330, B737, E190, AND MORE.

FAST DELIVERY, FULL COMPLIANCE, ZERO WORRIES, WE TAKE CARE OF EVERYTHING.


Just tell us your target, we handle everything else.



Short lead times



EASA Form 1 available



Multilingual, ready-to-install placard kits



End-to-end: design, certification & production



Skytec exceeded expectations by accepting our last-minute request, well ahead of the typical lead time, without compromising on quality or attention to detail. Their willingness to take on the challenge, combined with professionalism and a customer-focused approach, laid a strong foundation for continued partnership.

JF Service Glebs Strazdins
Maintenance Manager / Jet Flight Service SIA



CUSTOM CABIN COMPONENTS



Are long OEM lead times or unavailable parts putting your transition schedule at risk?

We engineer, certify, and deliver custom cabin components fast, so missing parts never delay your aircraft.



Custom components designed and certified under our DOA



Rapid sourcing or in-house production under our POA



Delivered with EASA Form 1 where required



Wide range of in-house designed & produced cabin comps., incl. windscreens, MCDs, and more

IF THE PART DOESN'T EXIST OR TAKES TOO LONG, WE MAKE IT HAPPEN. YOU DON'T NEED TO WORRY.

**Right parts.
Right time.
No delays.**



It was a pleasure to work with Skytec. We felt their support throughout all phases of the project. Their solution-oriented approach deserves praise. I would like to mention that they are a company we would be happy to work with on future projects.



A. Ufuk Gunes

Engineering Manager / Air Albania



LOPA CHANGES & CABIN RECONFIG.



Are LOPA changes and reconfiguration approvals taking months and keeping your aircraft grounded?

We cut months from certification and keep your aircraft flying, not waiting.



LOPA development & cabin reconfiguration under our DOA



Certain Major Changes & STCs approved in-house via our EASA privilege

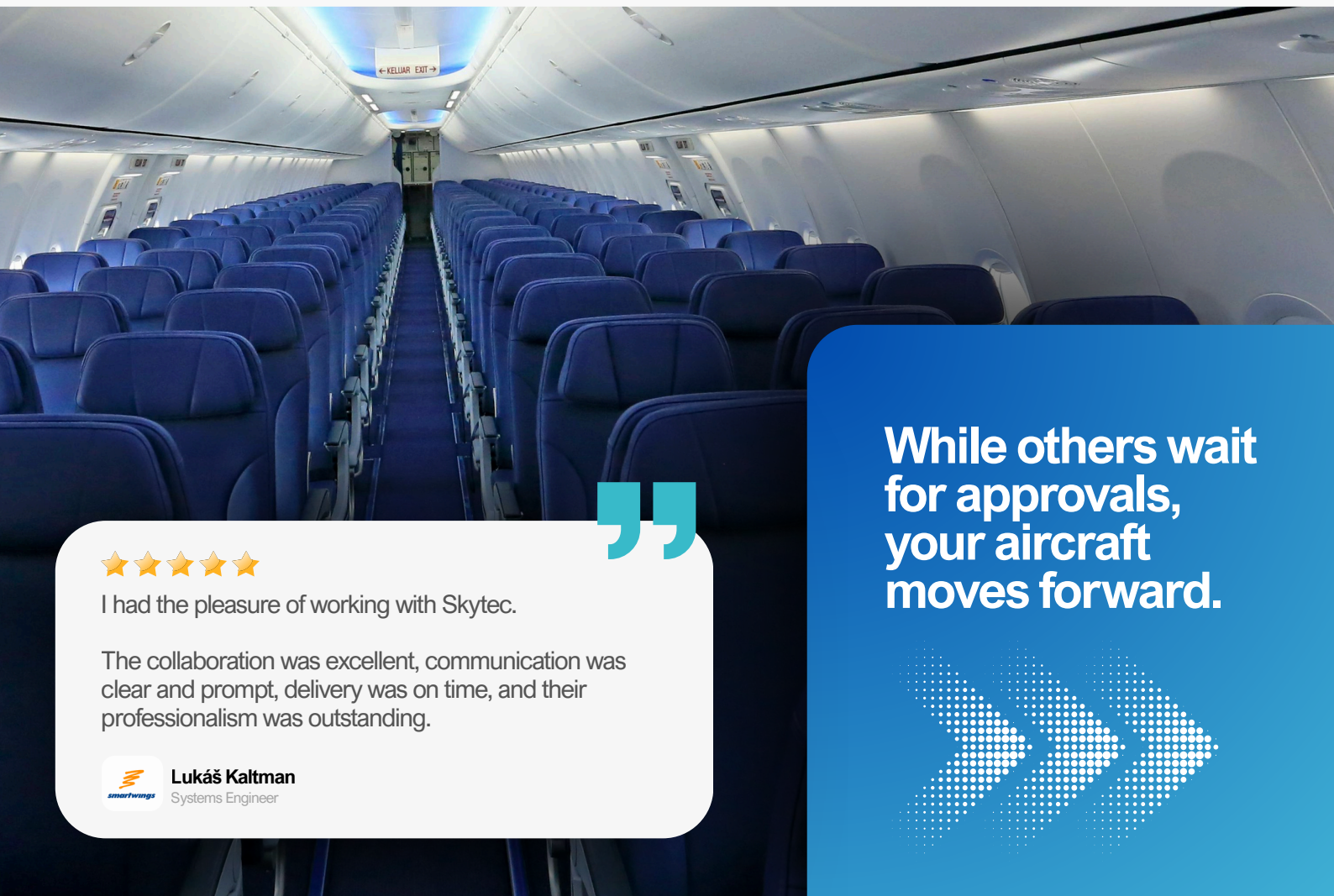


Certification lead time cut from ~6 months to ~2 months



Up to 4 months saved, major cost savings for operators & lessors

WE DRASTICALLY SHORTEN CERTIFICATION TIMELINES AND TAKE FULL OWNERSHIP, SO YOUR AIRCRAFT RETURNS TO OPERATION MUCH SOONER.



I had the pleasure of working with Skytec.

The collaboration was excellent, communication was clear and prompt, delivery was on time, and their professionalism was outstanding.



Lukáš Kaltman
Systems Engineer

While others wait for approvals, your aircraft moves forward.





PARTS SOURCING

 **Are missing parts, long OEM lead times, or availability issues keeping your aircraft on the ground?**

We source what you need fast, removing supply delays so your transition keeps moving.



OEM parts sourcing through trusted suppliers



Surplus components sourced quickly worldwide



Emergency equipment sourcing for immediate needs



One partner coordinating everything: no chasing, no delays

IF A PART SLOWS THE TRANSITION, WE SOLVE IT, FAST AND WITHOUT HASSLE FOR YOU.

Missing parts?
We source surplus or new components fast, worldwide



We are incredibly grateful to Skytec for their outstanding work and professionalism throughout our recent project. From the initial consultation to the final delivery and approval process, their team demonstrated exceptional expertise, precision, and dedication. We are happy having such a great partner in our vicinity.



Thorsten Kinzl
 Accountable Manager / Skyside GmbH



PROJECT MANAGEMENT & INSTALLATION SUPPORT




Do you want the transition handled without being involved in every detail?


Skytec takes full control, managing the project from start to delivery while keeping you informed.



Full coordination of engineering, certification, production, and sourcing



Clear timelines with regular progress updates, no chasing required



One single point of contact managing the entire transition



On-site support where needed to prevent issues and keep momentum

SIT BACK WHILE WE TAKE CARE OF THE COMPLEXITY, DELIVERING A SMOOTH, ON-TIME, WORRY-FREE TRANSITION.



Skytec stands out in design, certification, and production services by providing innovative solutions tailored to customer's needs. Their commitment to excellence ensures they consistently deliver outstanding results, effectively bringing the project outcome to exceed expectations.

 **Ferdinand Batenburg**
CEO / Bataviacon



Proactive project control and on-site support to keep transitions on schedule



THAT'S IT? NOT QUITE!

BEYOND TRANSITION AND DELIVERY, WE GO FURTHER.

From the **Skybox IFE solution** that enhances the passenger experience, to **custom cabin design changes**, **hardware integration**, and **tailored modifications**, we develop solutions that fit your aircraft and your operation.

When standard options aren't enough, we engineer **customized solutions**, designed, certified, and delivered to your specific needs.



Because
your aircraft
shouldn't
stop
evolving at
delivery.





+200
SATISFIED CUSTOMERS
ACROSS
+25 COUNTRIES

- FRONTROW aviation
- ACG AIRCRAFT LEASING IRELAND LIMITED
- CELAIRION
- ETIHAD ENGINEERING
- AVOLON
- smartwings
- Carlyle Aviation PARTNERS
- Austrian
- Condor
- AEROLYS
- Ethiopian
- air astana
- AIR INDIA express
- ISOVOLTA GROUP
- TURKISH AIRLINES
- Oscar Echo BUSINESS JET
- CATHAY PACIFIC
- SriLankan Airlines
- Luxair
- marabu
- SMARTLYNX
- Explicseat
- Cayman Airways
- Azul
- Lufthansa Technik
- BatAviaCon Ratenburg Aviation Consulting
- DIEHL Aerospace
- AAR
- AVCONJET
- Lufthansa
- IndiGo
- AIRBORNE TECHNOLOGIES
- air Hongkong 香港華民航空
- AIR ALBANIA
- Eurowings
- PEOPLE^S
- AIR INDIA
- BURRANA
- VISTA JET
- IAGGBS
- PLAY
- F/LIST



HAVE AN UPCOMING TRANSITION, CABIN CHANGE, OR NEW REG.?



Our team is ready to provide fast, clear guidance and customized solutions that keep your aircraft moving on schedule.



Our website ————— www.skytec-aero.com



Our e-mail ————— office@skytec-aero.com



Telephone ————— +43 2638 20305



HQ address ————— Industriestrasse 258,
2722 Weikersdorf, Austria



Linkedin ————— [skytec-aerospace-gmbh](https://www.linkedin.com/company/skytec-aerospace-gmbh)

